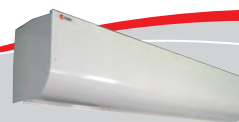
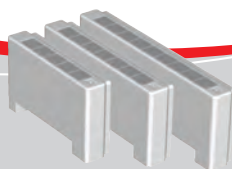


Chillquick light Technical data



Indoor/Outdoor unit	CQLI/SAC	2	3	4	5
Rated cooling capacity*	kW	5	10	15	20
Mains	V-Ph-Hz	400-3-50	400-3-50	400-3-50	400-3-50
Power input (complete system)	kW	2,5	5	7	10
Pre-cutout (slow fuse)	A	10	16	20	20
Circuits	kpl	1	1	1	1
Refrigerant	kg	2,5	3	4	5
Indoor unit CQLI, dimensions					
Width	mm	750	750	750	750
Depth	mm	350	350	350	350
Height	mm	1600	1600	1600	1600
Operating weight	kg	200	200	200	200
Outdoor unit SAC, dimensions					
Width	mm	900	950	950	950
Depth	mm	350	400	400	400
Height	mm	600	860	1300	1400
Operating weight	kg	58	90	110	120
Sound level**	dB(A)	40	40	45	53
Water flow, temp. 8/16 °C	l/s	0,12	0,24	0,36	0,48
Max. pipeline size	DN	18	22	28	35
Pump external pressure	kpa	98,0	95,0	87,0	63,0
Buffer tank volume	l.	100	100	100	100
Expansion tank size/pre-pressure	l/bar	4/0.5	4/0.5	4/0.5	4/0.5
Max. size of water network with standard expansion tank	l	450	450	450	450



* evap. temp. 5 °C, cond. temp 45 °C

** sound level at 10 m away in a free field

Chiller Oy reserves the right to make changes without separate notice!

Chiller air-conditioning solutions