

Model CGIW n-n-V8R-P1-P2-P3-ECO, details of type and technical values available from the selection program

	3-1	5-1	6-1	8-1	10-1	12-1	12-2	16-2	20-2	24-2	28-4	32-4	36-4	44-4	48-4	56-4	64-4	72-4	80-4	90-4	100-4	110-4	120-4
Cooling output kW	12,2	16,1	20,5	28,1	35,4	41,8	40,9	56,1	70,9	83,5	81,8	112,2	127	141,8	167	189,9	212,8	240,2	267,5	7,2	346,9	393,9	441
Capacity steps	0;100%						0;50;100%						0;50;75;100%										
Free-cooling output kW*	9,15	11,6	14,9	19,9	26,1	30,9	30,5	41,4	52,5	62,79	61,3	82,9	94,4	102,6	123,7	139,5	158,2	180,5	198,1	341,9	257,9	296,6	323,2
Power Type V-Ph-Hz	400-3-50						400-3-50						400-3-50										
Power input kW	5,6	7,3	9,11	11,9	14,6	16,8	18,2	23,7	29,3	33,6	36,4	47,5	53	58,5	67,3	78,4	89,6	99,7	109,9	125,9	142	160,8	179,5
Operating current A	9,2	12,1	14,6	19,7	24,2	28,8	29,2	33,3	39,3	57,6	58,5	78,6	87,6	96,7	115,1	130,5	145,8	161,7	177,7	205,7	233,6	264,1	294,6
Pre-cutout A (Slow fuse)	20	25	32	32	40	40	50	63	63	80	100	100	100	125	160	160	200	200	200	250	315	350	350
Circuits	1	1	1	1	1	1	2	2	2	2	2	2	2	2	2	2	2	2	2	2	2	2	2
Refrigerant Kg (R410A)	3	3,3	3,6	3,6	4	4,5	7,2	7,2	8	9	11	12,6	15,2	18	18	24	30	33	34	34	36	40	40
Buffer tank (liters)	300	300	300	300	300	300	300	300	300	300	800	800	800	800	800	800	800	800	800	800	800	800	800

Dimensions CGIW n-n-V-P1-P2-P3-ECO

Lenght mm	1240	1240	1240	1240	1240	1240	1790	1790	1790	1790	3450	3450	3450	3450	3450	3450	3450	3950	3950	3950	3950	3950	3950
Width mm	750	750	750	750	750	750	750	750	750	750	900	900	900	900	900	900	900	900	900	900	900	900	900
Height mm	1850	1850	1850	1850	1850	1850	1850	1850	1850	1850	1950	1950	1950	1950	1950	1950	1950	1950	1950	1950	1950	1950	1950

Weight CGIW n-n-V-P1-P2-P3-ECO

Freightage weight kg	587	587	612	627	632	644	941	971	1005	1030	1759	1829	1859	1989	2077	2374	2505	2570	2809	2957	3077	3207	3257
Operation weight kg	917	917	947	967	972	984	1269	1326	1365	1395	2579	2649	2679	2814	2902	3204	3335	3405	3644	3792	3917	4057	4107

Technical data:

Evaporator 7/12, condenser 36/42 °C • Ethylene Glycol content 35% • Power input: compressors (optional pumps, drycooler or condenser fans to be stated separately)

Size 28..120, pipe connections increasing unit length approx. +100 mm

* Free-cooling output: water 9/14 °C, outdoor temperature: 3 °C

Chiller reserves the right to make changes without separate notice.

N00287271 • Chiller reserves the right to make changes without separate notice.



ServiceNext™
Lifecycle Supervision

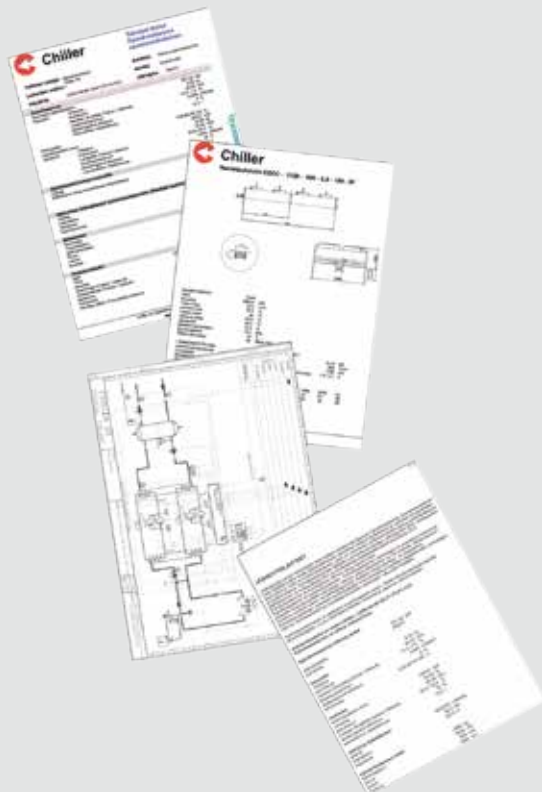
► Innovative cooling, heating and energy solutions

www.chiller.fi

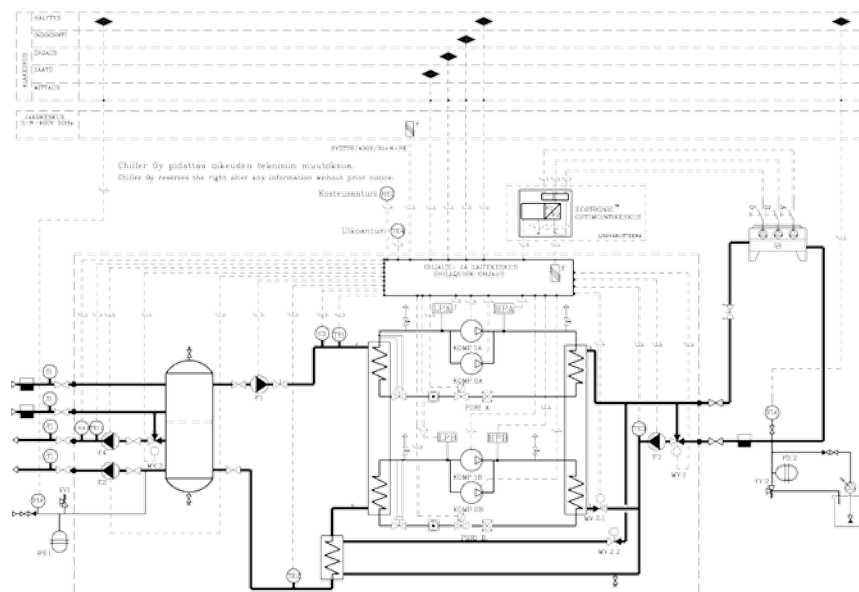
Designer's Toolbox

Chiller selection program for:

- ▶ Technical data
- ▶ Dimensional drawing
- ▶ Operating diagram
- ▶ Electrical diagram



▶ Chillquick Eco™ operating diagram



Chillquick Eco™
Environmentally Friendly Cooling

Free cooling as standard.

Accessories

Pump packages with two temperature ranges. In addition to the standard pump package, the chilled water stations can be equipped with an additional pump package. A typical case includes, for example, a dry flat blower unit or a beam circuit and a condensating intake air machine circuit. For a dry circuit, we deliver the pump and also a 3-way valve that is controlled by a hygrostat from the discharge air through our logic (enthalpy control).

Service Next™ is our wireless or wired service system that is designed for predictive service of the installation. We can monitor any errors made by the customer and forcibly correct them; we also know the service need of the device in advance. The service system saves the customer's costs by eliminating unnecessary visits of service personnel. Big service operations can be scheduled for off-season periods.

F-gas detector prevents expensive emissions that are dangerous to the environment. Any leak data is transmitted to the data systems.

Noise reduction options: Compressors are equipped with noise reduction bags, and in critical facilities the entire frame of the device can be soundproofed.

Other options: Please ask authorized sales offices for more information.