

**Model CGIW and CGIA n-n-X-W1-W2-W3-STD, details of type and technical values available from the selection program**

	3-1	5-1	6-1	8-1	10-1	12-1	12-2	16-2	20-2	24-2	28-4	32-4	36-4	44-4	48-4	56-4	64-4	72-4	80-4	90-4	100-4	110-4	120-4
Cooling output kW	12,2	16,1	20,5	28,1	35,4	41,8	40,9	56,1	70,9	83,5	81,8	112,2	127	141,8	167	189,9	212,8	240,2	267,5	7,2	346,9	393,9	441
Capacity steps	0;100%						0;50;100%				0;50;75;100%						0;50;75;100%						
Power Type V-Ph-Hz	400-3-50						400-3-50				400-3-50						400-3-50						
Power input kW	5,6	7,3	9,11	11,9	14,6	16,8	18,2	23,7	29,3	33,6	36,4	47,5	53	58,5	67,3	78,4	89,6	99,7	109,9	125,9	142	160,8	179,5
Operating current A	9,2	12,1	14,6	19,7	24,2	28,8	29,2	33,3	39,3	57,6	58,5	78,6	87,6	96,7	115,1	130,5	145,8	161,7	177,7	205,7	233,6	264,1	294,6
Pre-cutout A (Slow fuse)	20	25	32	32	40	40	50	63	63	80	100	100	100	125	160	200	200	200	200	250	315	350	350
Circuits	1	1	1	1	1	1	2	2	2	2	2	2	2	2	2	2	2	2	2	2	2	2	2
Refrigerant Kg (R410A)	3	3,3	3,6	3,6	4	4,5	7,2	7,2	8	9	11	12,6	15,2	18	18	24	30	33	34	34	36	40	40

**Dimensions CGIW and CGIA n-n-X-W1-W2-W3-STD**

Lenght mm	1240	1240	1240	1240	1240	1240	1790	1790	1790	1790	2100	2100	2100	2100	2100	2100	2100	2100	2100	2100	2100	2100	2100
Width mm	750	750	750	750	750	750	750	750	750	750	900	900	900	900	900	900	900	900	900	900	900	900	900
Height mm	1850	1850	1850	1850	1850	1850	1850	1850	1850	1850	1950	1950	1950	1950	1950	1950	1950	1950	1950	1950	1950	1950	1950

**Weight CGIW and CGIA n-n-X-W1-W2-W3-STD**

Freightage weight kg	405	415	425	435	435	455	680	716	725	740	810	1065	1085	1120	1170	1215	1460	1565	1730	1835	1945	2334	2450
Operation weight kg	435	450	465	480	480	480	735	765	785	805	890	1085	1105	1140	1195	1240	1490	1595	1765	1870	1985	2382	2520

**Techniacal data:**

Evaporator 7/12, condenser 36/42 °C • Ethylene Glycol content 35% • Power input: compressors ( optional pumps, drycooler or condenser fans to be stated separtely)

Size 28..120, pipe connections increasing unit length approx. +100 mm

In CGIA units the cooling capacity is given with a condensing pressure 45 °C • Extrapolation from output table is not permitted.

Final technical selection to be made from our dimensioning software.

Chiller reserves the right to make changes without separate notice. • CGIA products with R407 refrigerant!

N00287275 • Chiller reserves the right to make changes without separate notice.



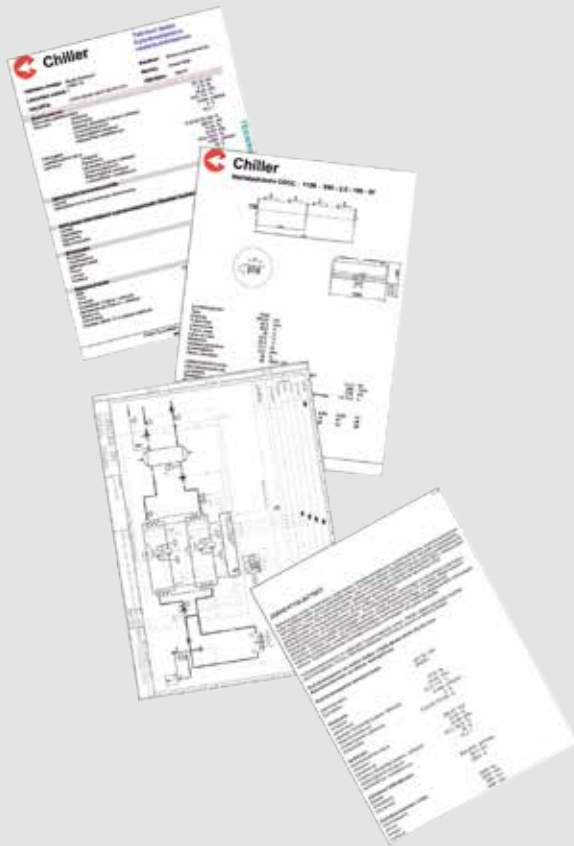
**ServiceNext™**  
Lifecycle Supervision

▶ Innovative cooling, heating and energy solutions

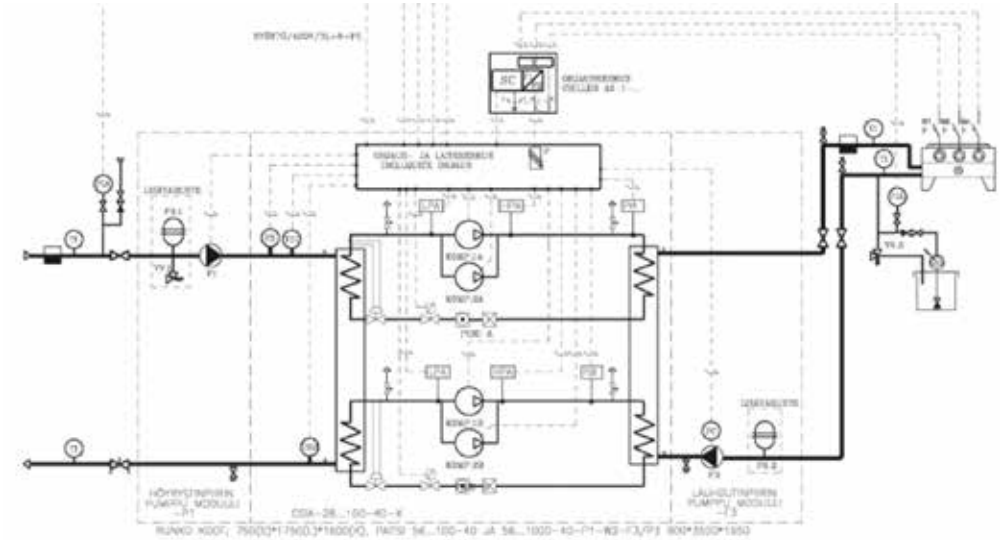
[www.chiller.fi](http://www.chiller.fi)

## Chiller Selection program

- Technical data
- Dry cooler's technical data
- Operating diagram
- Operating description



▲ CGIW liquid-cooled water chiller operating diagram CGIW funksionsdiagram



▲ CGIA air-cooled water chiller operating diagram

